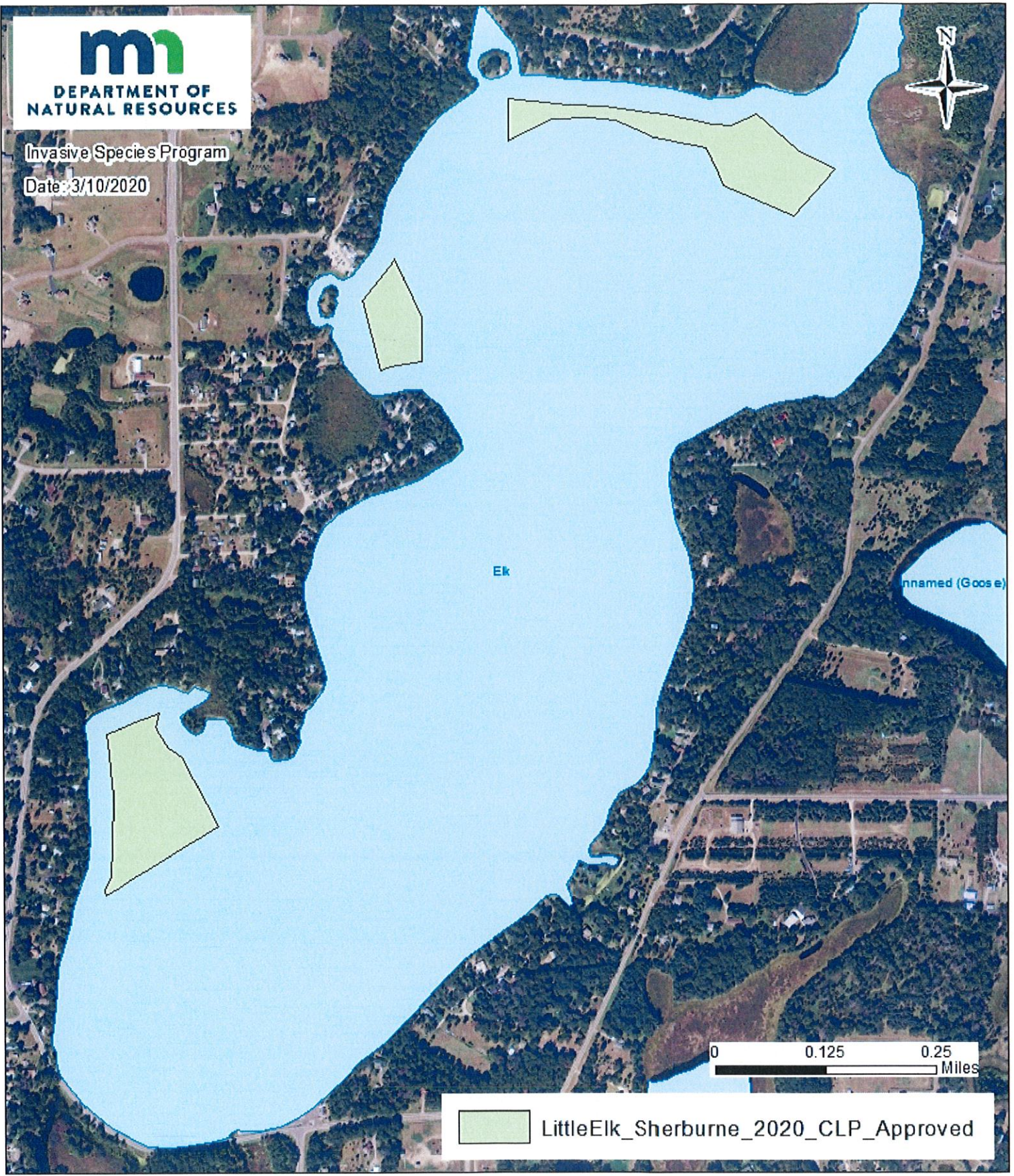




DEPARTMENT OF
NATURAL RESOURCES

Invasive Species Program

Date: 3/10/2020



0 0.125 0.25
Miles

LittleElk_Sherburne_2020_CLP_Approved

Little Elk Lake, Sherburne Co.(DOW 71005500)
2020 Curly-leaf Pondweed Pesticide Approved (22.1 acres)